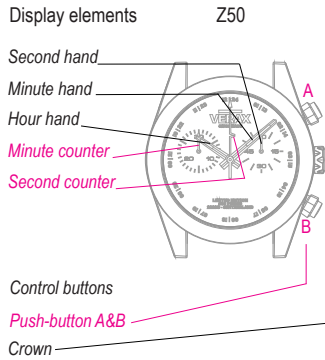


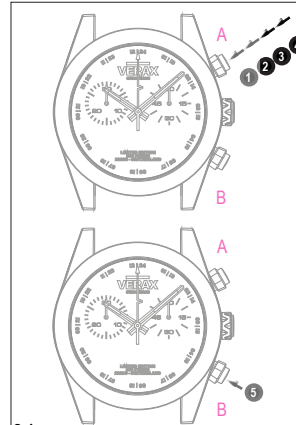


# USER'S MANUAL

## Description of the display and control buttons



01



## Chronograph: Accumulated timing

Example:

- Start:** (start timing)
- Stop:** (e.g. 15min 5 sec following 1)
- Restart:** (timing is resumed)
- Stop:** (e.g. 5 min 12 sec following 3)  
**20 min 17 sec**  
(The accumulated measured time is shown)

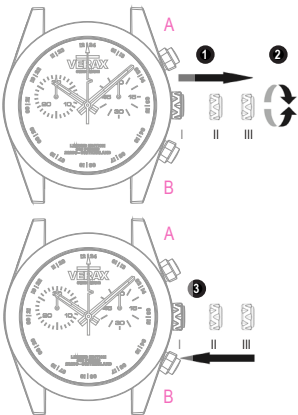
- Reset:**  
The chronograph hands are returned to their zero positions.

Please note:

\* Following 4 the accumulation of the timing can be continued by pressing push-button A (Restart/Stop, Restart/Stop,...).

04

## Setting the time



- \* Pull out the crown to position III (the watch stops).
- Turn the crown until you reach the correct time 8:45.
- \* Push the crown back into position I.

Please note:

In order to set the time to the exact second, must be pulled out when the second hand is in position "60". Once the hour and minute hands have been set, must be pushed back into position I at the exact second.

02

## Chronograph: Intermediate or interval timing

Example:

- Start:** (start timing)
- Display interval:**  
e.g. 20 minutes 17 seconds (timing continues in the background)
- Making up the measured time:**  
(the chronograph hands are quickly advanced to the ongoing measured time).
- Stop:** (Final time is displayed.)
- Reset:**  
The chronograph hands are returned to their zero position.

Please note:

\* Following 3 further intervals or intermediates can be displayed by pressing push-button B (display interval/ make up measured time,...)

05

## Chronograph: Basic function

(Start/Stop/Reset)

Example:

- Start:** Press push-button A.
- Stop:** to stop the timing, press push-button A once more and read the chronograph counters:  
**20 min/38sec**
- Zero positioning:**  
Press push-button B.  
(The chronograph hands will be reset to their zero positions.)

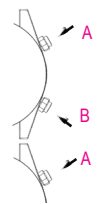
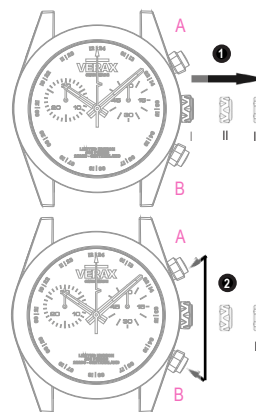
03

## Adjusting the chronograph hands to zero position

Example:

One or several chronograph hands are not in their correct zero positions and have to be adjusted (e.g. following a battery change).

- Pull out the crown to position III (all chronograph hands are in their correct or incorrect zero position.)
- Keep push-buttons A and B depressed simultaneously for at least 2 seconds (the second counter hand rotates by 360° → corrective mode is activated.)

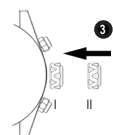


### Adjusting the second counter hand

single step ➤ A 1 x short  
Continuous ➤ A long

### Adjusting the next hand B

Adjusting the minute counter hand (position 6h)  
single step ➤ A 1 x short  
Continuous ➤ A long



- Returning the crown to position I  
Termination of the chronograph hands adjustment (can be carried out at any time).

06

